

Sector-led improvement and health reform

Alyson Morley

2 November 2012

Summary

- Drivers and intentions of health reforms
 - Summary of health reforms
 - Governance and leadership
 - Commissioning and integration
 - Public health
 - Public engagement
 - LGA corporate offer on sector-led improvement
 - Future SLI on health reform
-

Intentions and drivers of health reform

- The 'burning platform' – growing demand, shrinking resources and need for better quality
 - The need to move from treating sickness to a joined up and preventative approach
 - Clinically driven commissioning
 - Localism – an end to central direction
 - Putting the person/patient at the heart of services
 - Outcomes, not outputs
-

Overview of health reforms

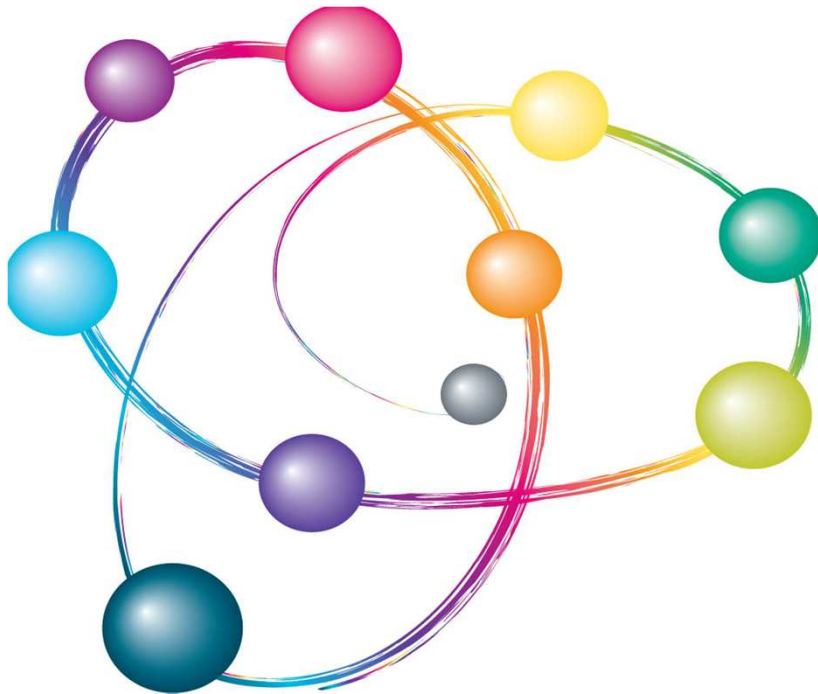
- **Governance and leadership** – Health and wellbeing boards as local system leaders
 - **Commissioning** – creation of clinical commissioning groups and focus on integration
 - **Public health** – creation of Public Health England and transfer of public health to local government
 - **Public engagement** – Healthwatch to replace local involvement networks and commissioned by local authorities
-

Starting point: core principles for SLI

- Councils responsible for own performance
- Stronger accountability - greater transparency
- Collective responsibility for performance
- LGA's role is to support councils



7 point 'offer' currently



- leadership support
- accountability tools
- transparent and comparable data
- peer challenge
- peer support
- knowledge hub
- learning and support

• Plus Towards Excellence in Adult Social Care, Children's Improvement Board, transition support on HWBs, Healthwatch, system leadership.

Current support for public health transition

- HWB leadership support offer
 - Knowledge Hub for HWBs
 - “From transition to transformation”
 - Healthwatch implementation support
 - LG Inform
 - Sector-led improvement and peer challenge, including support for those where risks of serious underperformance
-

A new offer would need to:

- meet the needs for support identified by councils
 - honour the principles agreed for the SLI model;
 - build on of SLI in children and adult services, and ongoing work with Health and Wellbeing Boards;
 - align with ongoing SLI support arrangements across local government (particularly adult social care) from April 2013;
 - take account of, complement and avoid duplicating wider regulatory, quality assurance, system leadership and improvement work across health services.
-